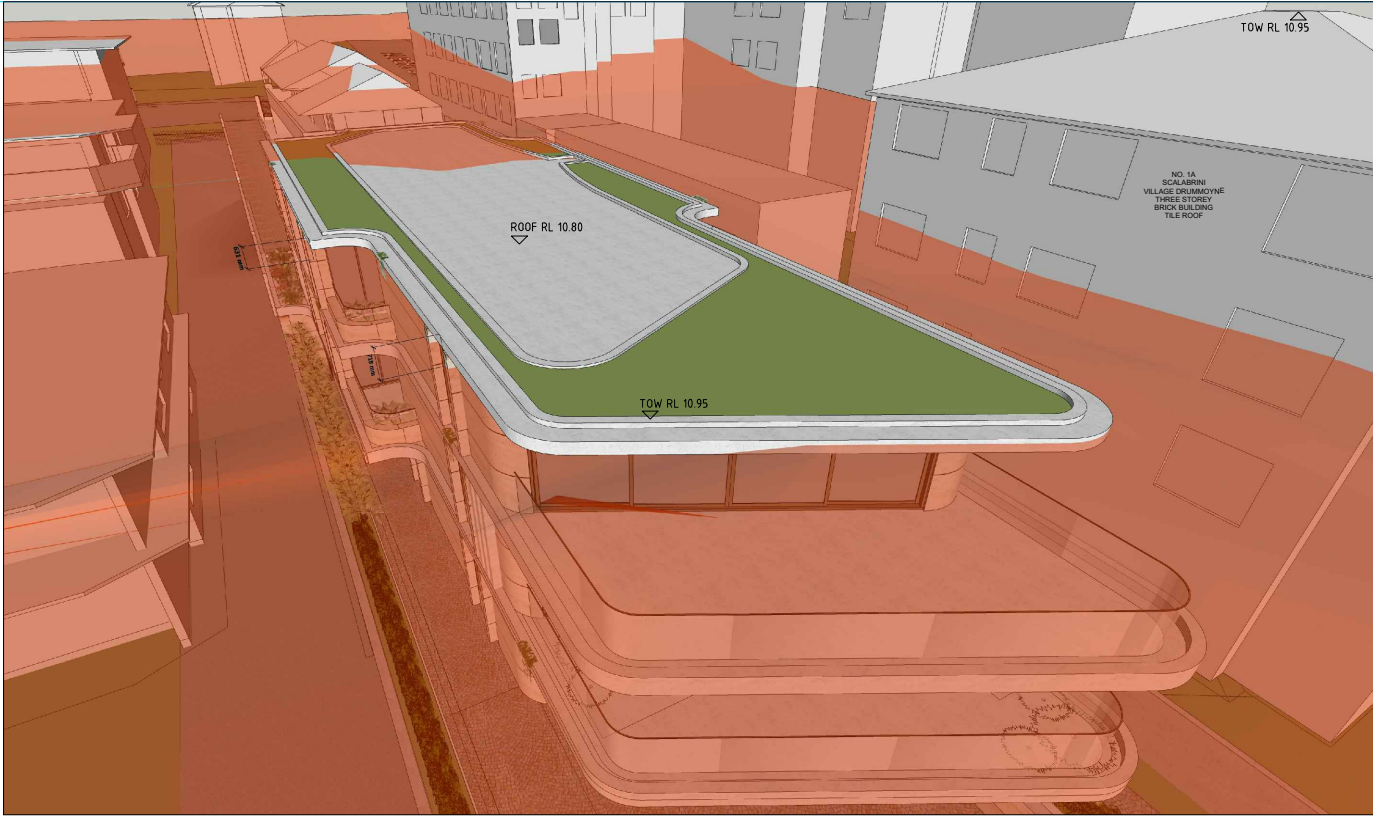
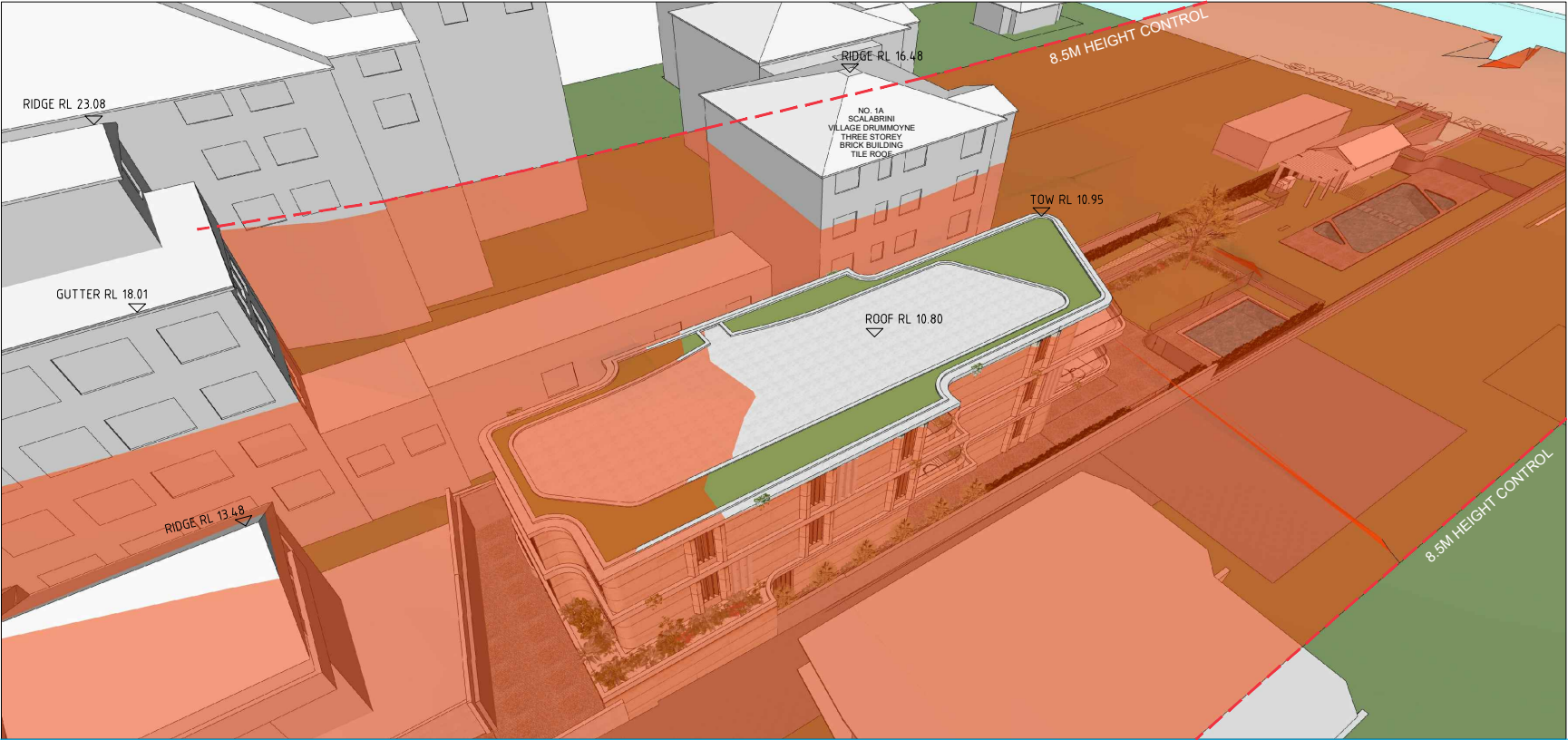


- GENERAL NOTES:
- ALL WORKS TO COMPLY WITH BUILDING CODE OF AUSTRALIA, REQUIREMENTS OF RELEVANT STATUTORY AUTHORITIES/ LOCAL GOVERNMENT & RELEVANT AUSTRALIAN BUILDING STANDARDS
 - DRAWINGS FOR THE PURPOSES OF DA ONLY - FURTHER CONSULTANT / AUTHORITY COORDINATION WILL BE REQUIRED AT CC STAGE WHICH MAY IMPACT ON DESIGN AND PLANNING LAYOUTS
 - ARCHITECTURAL PLANS TO BE READ IN CONJUNCTION WITH CONSULTANT'S DRAWINGS, SPECIFICATIONS & REPORTS
 - COPYRIGHT OF DESIGN SHOWN HEREON IS RETAINED BY PBD ARCHITECTS. AND AUTHORITY IS REQUIRED FOR ANY REPRODUCTION
 - AREA SCHEDULES SUPPLIED ARE APPROXIMATE ONLY - FUTURE ALLOWANCE FOR VERTICAL SERVICE DUCTS, STRUCTURAL WALL SYSTEMS AND CONSULTANT INPUT WILL BE REQUIRED

- LEGEND:
- AW AWNING
 - HW HIGHLIGHT WINDOW
 - CU A/C CONDENSER UNITS
 - FH FIRE HYDRANT
 - FHR FIRE HOSE REEL
 - FS FIRE STAIRS
 - MV MECHANICAL RISER TO FUTURE DETAIL
 - GC GARBAGE CHUTE
 - MB MAILBOX TO FUTURE DETAIL
 - PB PLANTERBOX
 - R 240L RECYCLING BIN
 - SK SKYLIGHT
 - ST STORAGE
 - WT HOT WATER UNITS

- KEY:
- DEMOLISHED / REMOVED

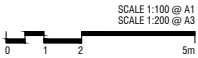
- MATERIALS LEGEND:
- AFG ALUMINIUM FRAMED GLAZING
 - AFL ALUMINIUM ELLIPTICAL FIXED LOUVERS
 - B BATTENS TIMBER LOOK
 - CP CONCRETE PLANTERBOXES
 - GB ALUMINIUM FRAMED TOUGHENED GLASS BALUSTRADE (TO BCA/AUSTRALIAN STANDARDS)
 - MF METAL FENCING (TO FUTURE SELECTION)
 - OFC CONCRETE WALL
 - PS PRIVACY SCREEN (TO FUTURE SELECTION)
 - RD ROLLER DOOR
 - RW-1 PAINTED WALL/SELECTED PAINT FINISH P1
 - RW-2 PAINTED WALL/SELECTED PAINT FINISH P2
 - SW SANDSTONE LOOK WALL (TO FUTURE DETAIL)



PROJECT:
PROPOSED RESIDENTIAL 3 STOREY FLAT BUILDING
76B, ST GEORGES CRESCENT
DRUMMOYNE NSW 2047

CLIENT: Project Xander Land Pty Ltd

ISSUE	DATE	DESCRIPTION	ISSUE	DATE	DESCRIPTION
P1	17.11.2020	ISSUED FOR COORDINATION			
A	18.11.2020	DEVELOPMENT APPLICATION			
B	25.11.2020	DEVELOPMENT APPLICATION			
C	03.06.2021	DA SUBMISSION			
D	24.11.2021	FOR INFORMATION			



DA530
HEIGHT BLANKET 1
ISSUE: D

DATE: OCT 2020 PROJECT NO: 2024

PBD | ARCHITECTS
ABN 36 147 035 550
P - 02 9698 8140 E - info@pbdarchitects.com.au W - www.pbdarchitects.com.au
Level 2, 52 Albion Street, Surry Hills NSW 2010